



compassion
house FOUNDATION

*More Than
A House*

ANNUAL REPORT
2019 - 2020



Table of Contents

4	Mission, Vision, Values
5	Message from Leadership
6	Board Members, Lifetime Members
10	Sorrentino's Compassion House
12	Statistics
14	Post-Treatment Support
16	Events
20	Volunteers and Supporters
22	Donors
28	Financials
30	How You Can Support Us

Mission

Compassion House Foundation supports women who must leave their homes for cancer care.

Vision

Compassion House Foundation strives to ease the distress of the cancer journey for women.

Values

Compassion, Community, Respect, Sustainability, Understanding, Excellence

Message from Leadership

Change. It challenges us. It creates opportunities. It evolves our thinking and requires us to work differently.

2019-2020 was an exciting year of change and growth for Compassion House Foundation. We welcomed a new Chief Executive Officer and Chair of the Board of Directors. We also added former guest, Joni Brodziak, to the board and said goodbye and thank you to retiring board member, Brenda Kissel, whose contributions helped enhance the profile of the Foundation in rural Alberta.

Under new leadership, the work has been ongoing to prepare the Foundation to weather the storm that is COVID-19.

In this report, you will read about the impact Sorrentino's Compassion House continues to have on women undergoing cancer treatment in Edmonton and how we have expanded our services to better meet women, and their families, in the communities we serve.

You will read about the success of familiar fundraisers like Syncrude presents Fashion with Compassion and new initiatives in communities across central and northern Alberta. We are also pleased to highlight the work of our volunteers who bring so much comfort and joy to our guests.

These pages are full of success stories that would not be possible without our amazing staff, volunteers, board members, supporters, and community partners. We want to thank each and every one of you for your time, commitment, dedication, and support over the past year. Because of you, we have the opportunity to provide healing and support to women and their families when they need it most.

Michelle Okere, CEO
Dr. William Hnydyk, Board Chair





2019-2020 Board of Directors

Dr. William Hnydyk – **Chair** / Dianne Balon – **Vice Chair** /
Curtis M. Palichuk – **Past Chair** / Kevin Kozak – **Secretary** /
Carly Rigler – **Treasurer** / Karissa Anderson / Joni Brodziak /
Sterling Derk / Jackie Fox / Barry Reid / Debra Tumbach

Founders

Betty Carlson / Deb Kerr /
Gisele MacMillian / Elexis Schloss

Lifetime Members

Bill Page (2009)
Past board president, donor, and volunteer

Stella Rago (2013)
Past board member and continued supporter

Barb Walker (2013)
Past board president and capital campaign II co-chair

Joanne Berger (2014)
Past board president and Fashion with Compassion chair

Barry Lazoruk (2016)
Past board member, donor, and volunteer



Lifetime Member

Barry Lazoruk

Barry Lazoruk committed more than 20 years of unwavering passion, dedication, and support to Compassion House Foundation.

After losing his wife to cervical cancer in 1998, Barry understood firsthand the financial and emotional burden of a cancer diagnosis on a family—especially those from rural Alberta who need to travel to Edmonton for cancer treatments.

Appointed as a Lifetime Member in 2016, Barry is perhaps best known as one of the founding organizers of the annual Compassion House Golf Event at Chinook Valley Golf Course in Woking, Alberta—a fundraiser that's supported Sorrentino's Compassion House since 2001. A resident of Grande Prairie, he also served on the Grande Prairie Committee for the Compassion

House Foundation Board of Directors during the Growing Compassion Campaign, which helped raise \$5 million to expand Sorrentino's Compassion House.

It is with heavy hearts that we learned of Barry's passing this last year. He will be greatly missed but not soon forgotten; he's made a lasting impact on Compassion House Foundation, easing the distress of the cancer journey for countless women and families across western Canada.

Sorrentino's Compassion House

Cancer Looks Like Me

Before 2019, Neala Best enjoyed what she called a “busy, full, and extremely happy life.” She approached all that she did with a joyful heart, filling her life with the things she loved: friends, volunteering, and long days at the salon and spa she co-owns in Slave Lake.

But in the two years prior, something changed within Neala. She was tired all the time and for a while, she attributed it to little sleep.

Two months and multiple doctors later, she received an answer: she was diagnosed with a very rare and aggressive strain of cancer in her vaginal wall, with little medical information for her doctors to reference in her treatment. She was told it was incurable and survival was unlikely.

“I was flying along in life and all of a sudden, I got this diagnosis, and my life wasn’t mine anymore,” said Neala. “I would look in the mirror and ask, ‘What does cancer look like?’ And say, ‘Well, I guess it looks like me.’”

Scheduled for treatment in Edmonton, Neala sought a “reasonable” place to stay, with no personal connections in the city or finances for a hotel. Enter Sorrentino’s Compassion House, recommended by two other women from Slave Lake who stayed there previously. Compassion House Foundation covered most of her stay through the Compassion Fund, and her friends and community fundraised towards the remainder of her stay and ongoing expenses at home: “I was so relieved,” said Neala.

At Sorrentino’s Compassion House, Neala found her home away from home and a

sincere acceptance of her diagnosis: “There’s a difference when you’re with women who are facing cancer. There’s an unspoken bond between you—you just know.”

Her initial five-week stay turned into three months of aggressive treatment and near-fatal complications. Yet, her positive attitude and faith never wavered; she shocked her doctors with her survival, finished treatment, and returned home to her “normal life.”

“I was jubilant and sad when I had to leave.”

Eight months later, the cancer returned, and she found herself once again at Sorrentino’s Compassion House. Despite much uncertainty, Neala said one thing is clear: “I’m so grateful for Sorrentino’s Compassion House and the community that’s created when you stay here. In every way you look at it, this place has been a blessing for me.”



Syncrude Suite



When Sorrentino’s Compassion House first opened in 2002 with six guest suites, it operated at capacity, turning away as many women as it accommodated. So, we turned to the community to support a much-needed expansion, later opening in 2013 with 15 guest suites.

Thanks to Syncrude, our capacity expanded again in 2019 with the sponsorship of a larger guest suite in the basement. In addition to the comforts found in each standard suite,

the Syncrude Suite also comes equipped with an additional kitchenette and living room so guests can have not just one, but up to three companions stay with them.

At just \$60/night, the Syncrude Suite provides an affordable option for guests with larger parties who must travel to Edmonton for cancer treatment, allowing us to expand our capacity to 16 guest suites and better meet the needs of the women we serve. Thank you, Syncrude!

Sorrentino's Compassion House

17,000 SQ
FT

3 Floors

16 Suites



381 Women Stayed At The House



175 New Stays

206 Return Stays

102 Companions Joined Our Guests

Did You Know?

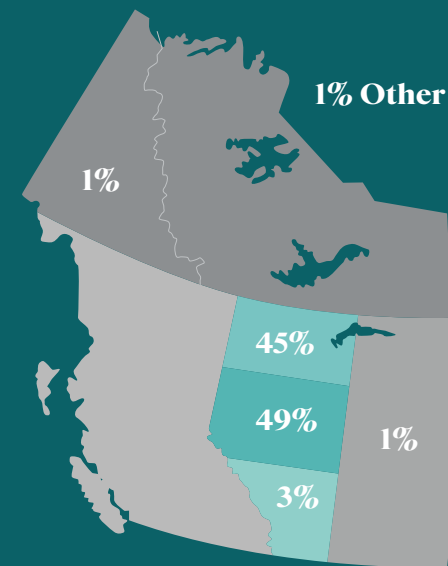
Guests can bring 1 adult companion, or up to 3 adult companions in the Syncrude Suite, when staying at the House.

The cost to stay at the House for 5 weeks (at \$35/night) is

\$1,225 

To stay at a hotel for 5 weeks (at \$150/night) is

\$5,250 —That's a cost savings of \$4,025 in accommodations alone.



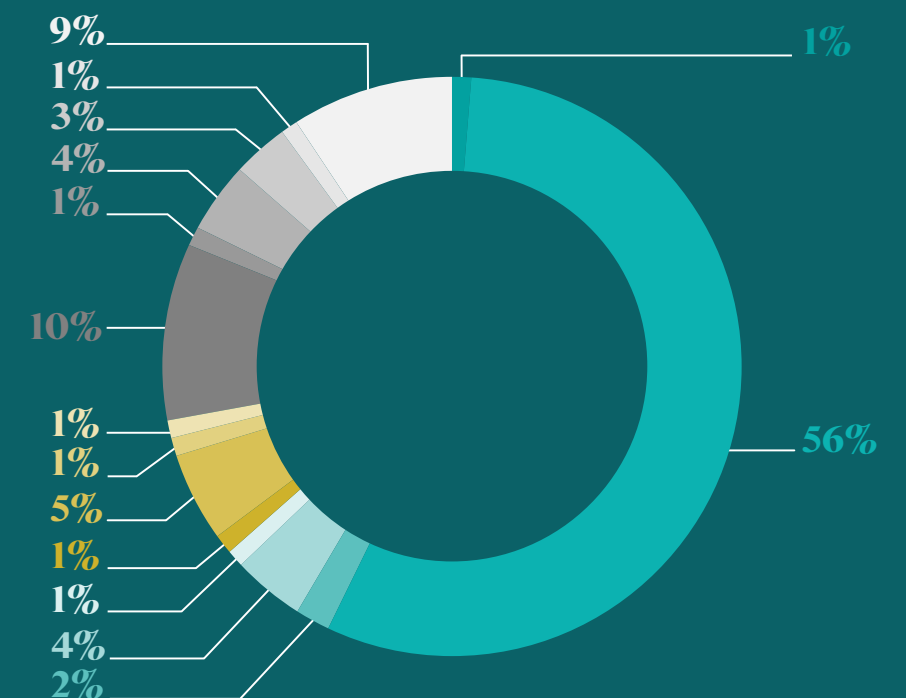
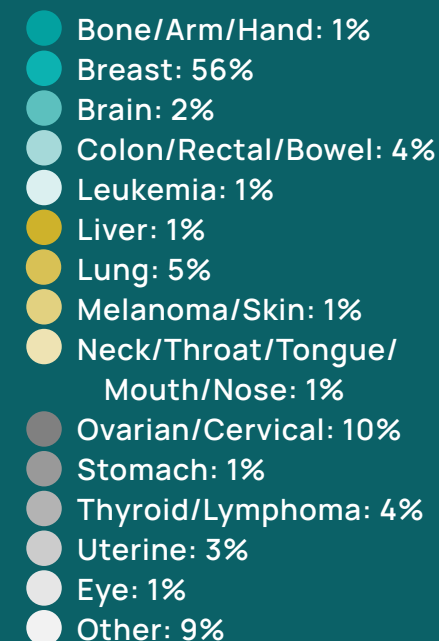
Guests traveled from

175 communities across western Canada

We saw the most women from:

Grande Prairie
Fort McMurray
Lloydminster

Any woman who lives a minimum of 50 kilometres outside of Edmonton and is booked for appointments or treatments is welcome.



Post-Treatment Support



Treatment ends, guests go back home, and... life is back to normal? That is not always the case and is exactly why we designed We Can Workshops for women who have experienced cancer and their support network. Facilitated in partnership with medical professionals, these one-day workshops empower participants with insight and tools to help them take charge and start thriving—not just surviving—in the post-cancer treatment journey.

Since its inception in 2018, we've hosted **nine We Can Workshops across Alberta**. This past year, we hosted **three workshops** with overwhelmingly positive attendance and feedback:

Edmonton, AB

Topic: Achieving “Living Wellness” with My Personality Type

Facilitator: Pat Casey Jurgens, RN, BScN, MN

Leduc, AB

Topic: Maintaining a Healthy Weight, Reclaiming Your Sensuality After Cancer Treatment, Using Humor to Help Heal

Facilitator: Dr. Anne Katz, Heather D. Swain

Bonnyville, AB

Topic: Taking Your Life Back and Making Your Own Wellness Plan

Facilitator: Pat Casey Jurgens, RN, BScN, MN

Did You Know?

Research shows that in cancer patients, an average of 20% develop depression and 10% suffer from anxiety—both of which, left untreated, can lead to a reduced quality of life. It is clear then that mental health is hugely impacted by a cancer diagnosis, but it is rarely prioritized in treatment plans. We Can Workshops prioritize mental health, providing support to women throughout their cancer journey.

What participants had to say:

“Fantastic workshops! I had such a good time and learned a lot about myself.”

“I needed to be re-energized. Thank you so much!”

“It was an excellent workshop and at a time when I really needed it—very informative and full of laughter. It was nice to reconnect with other House guests from during my stay.”





Fashion with Compassion

Syncrude presents Fashion with Compassion has earned a reputation as the go-to fashion event in Alberta, delivering a world-class fashion show while also raising critical funds to support our organization—and the 2019 event was no exception. In fact, it was one of our most successful renditions in the recent history of Fashion with Compassion.

Nearly 1,200 people attended the 23rd annual luncheon and gala at the Edmonton Convention Centre for a decadent meal, flowing bubbly, and community networking, while high-end designs and professional models hit the runway in a dynamic fashion show produced by Mode Models.

As always, the highlight of the event was the special models walk, where previous guests of Sorrentino's Compassion House, along with other fellow survivors, took to the stage

to represent courage and survival. One of the special models, Neala Best, moved attendees with a speech on her personal cancer journey, "Cancer Looks Like Me," highlighting her stay at Sorrentino's Compassion House as an unexpected blessing during life's biggest interruption.

Altogether, the event raised \$258,000 in support Compassion House Foundation and the operation of Sorrentino's Compassion House. Specifically, proceeds from the event keep the fees for Sorrentino's Compassion House reasonable, making it more affordable for our guests.

\$258,000 Raised

Community Events

Swing and a Hit: Golf Event Helps the House for Two Decades

In the summer of 2000, long-time friends Barry Lazoruk, Wendy Blonski, and Metro Maccooh came up with the idea to host a golf tournament to financially support those in northern Alberta and British Columbia who needed to travel to Edmonton for cancer treatments.

The three of them understood that cancer touches everyone in one way or another. Barry lost his wife, Angie, two years earlier to cervical cancer and understood firsthand the financial and emotional burden of a cancer diagnosis on a family. Wendy was battling breast cancer herself and experienced how difficult it was to uproot her life and stay in hotels in an unfamiliar city to receive the treatments she needed to survive. And Metro, a local business owner, avid golfer, and philanthropist, decided there was no more worthy a cause to invest in.

They decided to act, eventually partnering with the Compassion House Foundation on the first-ever Compassion House Golf Event in 2001 at Sylvan Meadows Golf and Country Club in Rycroft, Alberta, which Wendy owned. It was extremely successful and met with such tremendous support from several communities across northern Alberta and British Columbia that the trio decided to make it an annual event.

The golf tournament took place at Sylvan Meadows Golf and Country Club for several years until, after a change in ownership and eventual closure, Barry and Metro moved the event to its now long-time venue, the Chinook Valley Golf Course in Woking, Alberta.

After Metro's passing in 2011, Barry continued the event with the help of community volunteers. Over the years, they dedicated countless hours and miles soliciting prizes and monetary donations, along with numerous phone calls, letters, and emails to bring awareness to the cause. A genuine love for all those affected by cancer motivated the success of event, raising a total of \$277,190 to date.

With Barry's passing in 2020, his son Trevor will continue the legacy of the tournament in 2021. The Compassion House Golf Event, subtitled "Barry's Last Swing", will be dedicated to the memory and incredible contributions made by Barry himself.



From left to right: Founding organizers Metro Maccooh, Wendy Blonski, and Barry Lazoruk

Compassion Knows No Bounds—or Boundaries

Kind and compassionate, our supporters hosted 20 community events across Alberta to raise \$49,500 in support of Compassion House Foundation.

Compassion House Golf Event at Chinook Valley Golf Course

Woking, AB
\$12,000 raised

Baba Bowl

Edmonton, AB
\$12,000 raised

Cup of Compassion by Hinton Rotary Club

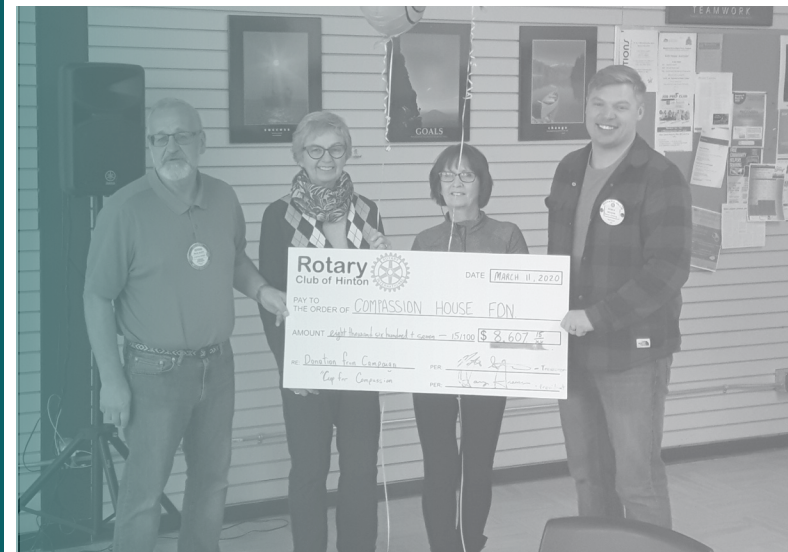
Hinton, AB
\$8,600 raised

Save Second Base Slo-Pitch Tournament

Eckville, AB
\$5,400 raised

"Embrace" Screening by Erin Weeks Fitness

Grande Prairie, AB
\$4,400 raised



Volunteers and Supporters

We're lucky to have the support of incredible volunteers at Compassion House Foundation. Their commitment truly makes it all happen.

450

Volunteer Hours

at Sorrentino's Compassion House

Individual volunteers performed light housekeeping and administrative work, played music for guests, and facilitated guest activities including:



Beauty
Tutorials



Yoga and
Movement
Sessions



Craft
Nights



Game
Nights

Group volunteers cooked breakfast for guests, planted flowers, and freshened up our outdoor space with spring yard clean-up and other light landscaping.



Every Friday for 6 weeks, different teams from Univar Solutions cooked breakfast for our guests. They planned the menu, bought groceries, prepared the food, and joined in on the meal.



Volunteers with Alberta Blue Cross' Hearts of Blue stepped up in May to plant flowers in pots around the House and clean up the yard.



Event Volunteers

Volunteers also helped with the smooth execution of our fundraising events, particularly **Fashion with Compassion**. Between the luncheon and gala, **59 volunteers** assisted as greeters, in the count room, with fundraising initiatives, and with event tear-down.

Alberta Not for Profit Association External Case Competition

Compassion House Foundation was fortunate to be chosen as the case partner for the only live not for profit case competition in North America. During the last week of February, students from universities across North America traveled to Edmonton to take on challenges facing our organization. Teams had 24 hours to develop a strategy to address key issues in order for us achieve our goals.

We were blown away at what teams came up with in such a short period of time. The finals included a 15-minute public presentation and question period with a panel of five judges. In the end, the winners were:

First – University of Alberta
Second – McMaster University
Third – Mount Royal University

Congratulations to the University of Alberta for taking first place and receiving \$5,000 to donate to the charity of your choice.

Thank you to the ANPA executives, the University of Alberta Business Student's Association, Muttart Foundation, and the Alberta School of Business for making this case competition a reality.

We look forward to implementing some of the solutions brought forward.

Thank You

Donors Donors

Compassion House Foundation is funded solely by the generosity of donors. From providing a haven at Sorrentino's Compassion House to post-treatment programs focused on continued healing, our donors make everything possible.

Thank you to our 2019-20 donors for your support. Your compassion helps ease the distress of the cancer journey for women across western Canada.

Every effort is made to ensure the accuracy of our lists. If your name is misspelled, incorrectly listed, or omitted, please contact us at 780-434-7290 so we can correct our records.

Charitable Registration Number: 871667473 RR 0001



Friends

\$100 - \$999

1791596 Alberta Ltd.
Aaron Giebelhaus
Acer Electric
Ada Tang
Adam Bilyk
Adriana Lazarescu
Aimie Williams
Alberta Association of
Insurance Adjusters
Alberta College of Social Workers
Alicia and Donald Nielsen
Alicia Bourbeau
Alison McGavigan
Allen and Shirley Ness
Allice Legat
Alvin Ballachay
Alyson Quon
Amanda Bacon
Amelia Hunka
Amisk Park Lutheran
Church Women
Andrea Venne
Ange Enzenauer
Angela Ferguson
Anisia Hurst
Anita & Randy Gartner
Ann Muhlbach
Ann O'Neill
Anna Marie Sewell
Annemarie Clarke
Annette Loisel
Annette MacDonald
Jocelyn Gervais
ATCO Electric
ATCO EPIC - Pipelines & Liquids
Barbara Burns
Barbara Gleiberman
Barbara Rolheiser
Barbara Walker
Barbara Wray
Bart Johnson
Bashaw Royal Purple Lodge
No. 176
Bea Bohm-Meyer
Belinda Chiang
Belvia Wrobel
Joan Kesenheimer
Bernard J. Demers
Bertita Elvina
Beth Taber
Beth Yaremchuk
Beverley Mahood
Beverly Stachnik
BGIS Canada LP
Bobbi Mathiesen
Brandie-Lee Wolbeck
Breanne Windle
Brenda Kaminski
Brenda Malo
Brenda Reid
Brenda White
Brian Doutaz

Brian Forster
Brian Murray
Brian Tucker
Brigitte Lutfy
Brittany Harty
Bruce and Carol Bieraugle
Bruce Paulson
Bruce Thompson
Budget Blinds Edmonton
& St. Albert
Cally Kranic
Camrose Royal Purple Lodge #49
Canadian Association of
Foodservice Professionals
Canadian Royal Purple Society
Myrrnam Lodge No 242
Candice Dowhaniuk
Canessco Services Inc.
Caren Bilyk
Carla Woodward
Carly Rigler
Carmelle Boston
Carmen Bossmann
Carol Blair & Associates
Carol Glasgow
Carol Koleyak
Carol Montgomery
Carol Spooner
Carolyn Anderson
Carolyn Clarke
Carolyn Nault
Carrie Sutton
Catherine Cruikshank
Catherine Lee
Charlene Clarke-Todoruk
Chelsea Hawrelak
Chelsea Tao
Cheri Wolbeck
Cheryl Finnestad
Chris Culshaw
Christine Greene
Christine Zwozdesky
Claire Anctil
Claire Thomas
Clem and Angela Labrecque
Cloud 9 Stampers
Clover Simoneau
Colette Miller
Colleen Drapaka
Colleen Eckert
Colleen Kerfoot
Colten Bishop
Connie Giesbrecht
Connie Penney
Connie Sosiak
Costco Wholeslae Canada Ltd. -
Edmonton Store #156
Courtney Rozendaal
Curtis Palichuk
Cynthia Barrington
Cynthia Jones
Dalal Black

Daleen Booyens
Danylo Sirskyj
Brian Tucker
Darlene Major
Darlene Ellsworth
Darlene Skinner
Lynda Thompson
Dawn Veltikold
David and Marcella Ward
David Head
David Whitson
Deborah Morley
Debra Tumbach
DeeAnn Hopkyns
Del Delkie
Del Marlow
Della and Mel Wells
Denis and Denise Daugherty
Denise Bourque
Denise Lee
Denise McCarty
Dennis and Elaine Helfer
Derek Ferro
Desnna Allen
Diana A. Carfantan
Diane Zinyk
Dianne Dubeau
Beverley Manderscheid
Colleen Brennan
Donelda Patterson
Donna Whitford
Donna Hansen
Donna Kniel
Doreen Bjorge
Doris Benoit
Doris Hamm
Doug and Lynn Spasiuk
Doug Ramsey
Alla Dekterov
Kelly Anderson
Paul Byrne
Dyanne Lyons
Edgerton Royal Purple Lodge
No. 224
Edmonton Columbian Choirs
Edna Lamport
Eileen Brulotte
Eileen McDonald
Eileen Richardson
Elaine Hope
Colleen Eckert
Eleanor Iftody
Elizabeth Lim
Elizabeth Skolrood
Ellery Lemky
Elsa Oberg
EMMYDEVEAUX
Engynn Technologies Ltd.
Enyinnah Okere
Eresha Fernando
Erica Bateup
Erin O'Neill
Erin Wishart

Esha Panesar
Exquiscare
Faye Hatch
Flagstaff County
Florence Derewynka
Fort Saskatchewan Royal Purple
Lodge No. 212
Frances Kilgour
Francis Stempfle
Frank and Anita Kowalski
Freda Chartrand
Gail Andrew
Garry and Valerie Keen
Gary and Donna Oliver
Geoff Nielsen
George Van Horn
Gerald Kallal
Gerard Levasseur
Gerger Enterprises Ltd.
Gillian Clarke
Gisele Yaceyko
Glenna Armstrong
Gordon and Lynette Graff
Gordon Baron
Grande Cache Institution
Grant Chomiak
Grant Pilgrim
Great West Newspapers
Gwen Davies
Halah Alhussaini
Harry Ullrich
Heather Davis
Helena Lee
Helene Leggatt
Holly and Doug Richardson
Holly Murphy
Holly Regel
Imoleayo Adeyeri
Inspired Home Interiors
Irene Goebel
Iris Ciona
Iris Pullishy
Isabelle McDermott
Jacie Bond
Jack Gerger
Jacquie & John (Curly) Jones
Jada Dwery
James Morrissey
Jamie and Karen Pallett
Janelle Ewasko
Janet Craig
Janice and Alex Hogg
Janice Ewasiw
Janice Jacquard
Janice Sarich
Jayne MacLaren
Jean Paterson
Jeanne Lemire
Jeannette Ouellette
Jeneane Grundberg
Jennifer Donaghey
Jennifer Leavitt

Jennifer Salpeter
Jenny Hart
Jenny Khakh
Jerry Beaudette
Jessica Bromley
Jim Murphy
Joan Gillett
JoAnn Sabo
Joanna Davidoff
Joanne Archibald
Joanne Balogh
JoAnne Gibson
Joanne Pawluk
Joanne Platana
Joe and Rosamond Burkard
John Hopkins
John Humphries
Jonathan MacLeod
Jorge Mayo Professional
Corporation
Judith Pals
Judy Sawatzky
Julie Allen
John Agrios
K.D. and C. Holm
Kara Fewchuk
Kara L. Flynn
Karen Kirby
Karen Krawchuk
Karen Kroeker
Karen Lequier
Karen Madusa
Karen Plourde
Karey Heard
Kathleen Meyer
Kathy Lentz
Kathy Bellamy
Kathy Bonazew
Kathy Briere
Kathy Henderson
Kathy Kashuba
Kathy Mason
Kay Marchand
Kayla Gaffney
Yalee Yawney
Keep Design
Ken and Donna Mack
Ken Sargent GMC Buick Ltd.
Ken Sato
Kerry Mahood
Kevin Schultz
Kim Rutherford
Kim Hayduk
Kirsta Poffenroth
Kristin Pasma
Kristina Williams
Kryzia Wisdom
Kyle and Ashley Bodnarchuk
Laiken Reid
Lana Bistriz
Laura Brown
Laura Douglas
Laura Willcocks
Laurel Minich
Laurie Eliuk
Laurie Jackson
Laurie Nelson
Leanne McFee
Learnor Fee
Lee Goertzen
Lee-Lan Holdings Ltd.
Leslie Horn
Leslie Musselwhite
Lia Cultraro
Lillian Chimko

Lillian Norman
Linda Capowski
Linda Cleary
Linda Rzepka
Lindsay MacPhie
Lindsay Sparrow
Lisa Barry
Liz Berends
Loretta Haugen
Lori Derkson
Lorraine Demers
Lorraine Reed
Louise Coleman-Bradford
Louise Ellis
Louise Fairchild
Louise Marceau
Lyll Pratt
Lynda Slusarczyk
Lynda Wollnann
Lynn Rutherford
Lynne Washington
Lynne Grose
Marc Curial
Marcie Jiwa
Margaret James
Margaret Peters
Marge McLennan
Maria Doll
Marian Bruin
Marie A Kroetsch
Marie Prefontaine
Marilyn Duigou
Marilyn Dusener
Marilyn Horn
Marion Wilson
Marjorie Carr
Marjorie Loupret
Marjorie Nelson
Mark Corkery
Marlene Monro
Marnie Fleming
Martha Jamieson
Martine Yamniuk
Marvin Tunke
Mary Aitken
Mary and Eddie Fisher
Mary Head
Mary Olbey
MaryGail Yetman
Maude Baker
Maureen Carter
Maureen Dea
Meghan Unterschultz Klein
Melanie Turvey
Melissa Altamirano
Melissa Banack
Menita Hayter
Meredith DeForest
Michele Kelly-Rankin
Michele Roach
Michelle Okere
Michelle Hordal
Michelle Millard
Michelle Woodward
Mike and Joanne Richter
James C. Rudolph
Dawn R. Hodgins
Dorothy Scott
Linda Mikelson
Jean Lund
Mellissa Kraft
Phyllis Nurgitz
Wendy Kinsella
My Tribute Gift
Myrna Wilson

Nancy Burns
Nanette Charest
Naomi Asbell
Nicole Forsythe
Nicole Guenette
Nicole Knott
Shirley Harris
Nilex Inc.
Noah, Easton and Tavish Warren
Nore-Aldein Assiff
Norm and Sue Glowach
Northgate Baptist Church
Oksana Termeer
Optix Trials Inc.
Order of the Royal Purple
Eaglesham #318
Pamela Di Pinto
Patricia Beteta
Patricia Fast
Patricia Nieberding
Paul Manuel
Paul and Gisele Belzil
Peace Hills Trust Co.
Peter Atkinson
Peter MacPhie
Philipia Bates
Phoebe Elliot
Phyllis Ludwig
ProActive IT Management Inc.
Qian (Lisa) Shen
Randy Parish
Raylene Palichuk
Raymond Olsson
Regan Solbak
Remedial Wellness Centre
Renee Senko
Rhonda Pierrard
Richard Cowan
Richard De Zilva
Richard Elniski
Richard Houle
Rob Campbell
Roberta L. Milton
Roberta Moon
Robyn Fenske
Rona Scott
Joanne Berger
Ronald Berger
Ronald Brost
Rosemarie Kerr
Rotary Club of Edmonton
Strathcona
Roxanne Worobetz
Ruth Crosswhite
Sally Lore
Samantha Barros
Samantha Williams-Chapelsky
Sandra Andre
Sandy Brolly
Sandy Jacobson
Sandy Timmer
Sara Tharakan
Saranjeet Kaur Sooch
Sayler Reins
Shane Matwie
Shannon Coutu
Shannon Darvill
Sharlene Page
Sharlene Rutherford
Sharon Burden
Sharon Jeffery
Sharon Miskiw
Sharon Morin
Shaunna Mireau
Shawkat Sabur

Sheelagh McCourt
Shelley Miller
Sherri Wenzel
Sherry Maine
Sherry Matheson
Shirley Evans
Nigel Thorne
Shirley West
Simone Gagnon
Skyler Lee
Solace Medical Clinic
Sparrow's Auto Service Ltd.
St. Albert Quilters' Guild
St. Charles Catholic
Women's League
Stephanie Chau
Stephen Anderson
Sullivan & Emerson Hope
Sumptuous Lollies
Sunset Diesel Services Ltd.
Susan Dwery
Susan Gundesen
Susan McArthur
Susan Mckenzie
Susan Monson
Susan Seeley
Susan Wong
Sydney Moore
Sylvia and James Gray
Sylvia Lazaruk
Sylvia Spelrem
Sylvianne Dion
Tammy Schermerhorn's
Tammy Wiebe
Tara Schneider
Ted Shavchook
Terry Desaulniers
Thelma Watrich
Therese Gosselin
Thomas Andrew
Thuc Nhi Dong
Tina Wood
Tom and Brenda Watkins
Toni Canonaco
Tracy Presisniuk
Tracy Rohl
Trudy Sjoberg
Tyler Butler
United Church Women
Valerie Berger
Vanderwell Contractors (1971) Ltd.
Vanessa Bourgeois
Verna Erickson
Vernon Ralph
Veronica Lynn Vinge
Veronica Odynski
Veronica Sullivan
Viking Royal Purple Lodge #122
Viola Braun-Fox
Violet Bergen
Violet Jackson
Wanda Paulson-Stensrud
WE Solutions
Wendy Douglas
William Mekechuk
Winnie Wong
Wizard Painting Ltd
Wolski Design Group Ltd.
Yolanda Van Wachem
Yvonne Hebert
65 Anonymous Donors

Contributors

\$1,000 - \$4,999

Adrian and Rosalie Karpluk
Benevity Inc.
Candace Hartman
CEDA
David Moseley
Dianne Balon
David R Bundle
DUVAL
Edmonton Community Foundation
Erin Weeks Fitness
Heather Mathieson
Jackie and Jeffrey Polovick
James D. McNeill
Karen Hesse
Karissa Anderson
Katherine Ellis
Lauren Panaro
Linda Needham
Lori Bianchini
Mabel Wong Tam

Maggie Kozina
Marie Ginette Markowski
Odvod Publishing
Peace Hills Gen. Ins. Co.
Progressive Contractors
Golf Tournament
Pulp Studios Inc.
Rocky Weirenga
Sabre Communications Inc.
Shoppers Drug Mart Life Foundation
Signpatco Sales Ltd.
Suzanne McNeill
Tamara Lawrence
The Estate of Margaret Philip
Thomas and Melanie Nakatsui
United Way of the Alberta
Capital Region
William Hnydyk
Vegreville Royal Purple Lodge No. 125
4 Anonymous Donors

Sustainers

\$5,000 - \$9,999

856107 AB Ltd.aa/ Fix Auto Edmonton West/North
Alberta Royal Purple Lodges
CanadaHelps
Cliff Lede Family Charitable Foundation
Cloud Nine Pajamas Inc.
Don Whiteford
F12.net
Jody McNeill

Kevin Kozak
Loruk Farms Ltd
Nutrien
Oilers Entertainment Group Canada Corp.
Parabelle Properties Ltd.
PayPal Giving Fund Canada
Sandra Paetsch

Builders

\$10,000 - \$24,999

ATB Financial (100 Street)
Jason Blower Illustration
3 Anonymous Donors

Benefactors

\$25,000 - \$49,999

Dave and Sandra Mowat

Bronze

\$50,000 - \$99,999

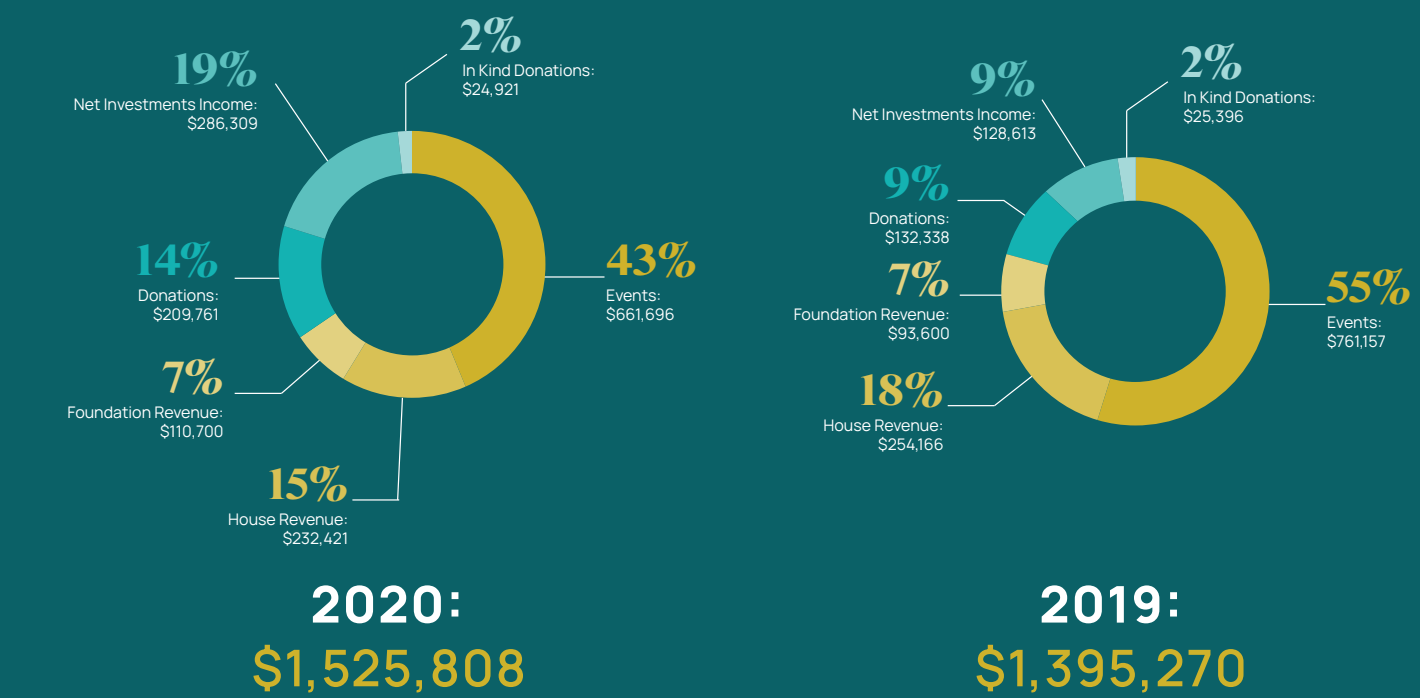
Syncrude Canada Ltd.

ASSETS	2020	2019
Cash	\$140,903	\$177,530
Marketable Securities	\$4,883,084	\$4,745,419
Accounts Receivable	\$10,496	-
Goods and Services Tax Recoverable	\$9,739	\$11,747
Prepays and Term Deposits	\$6,412	\$7,118
	\$5,050,634	\$4,941,814
Long Term Marketable Securities	\$125,000	\$250,000
Tangible Capital Assets	\$4,439,759	\$4,523,183
	\$9,615,393	\$9,714,997

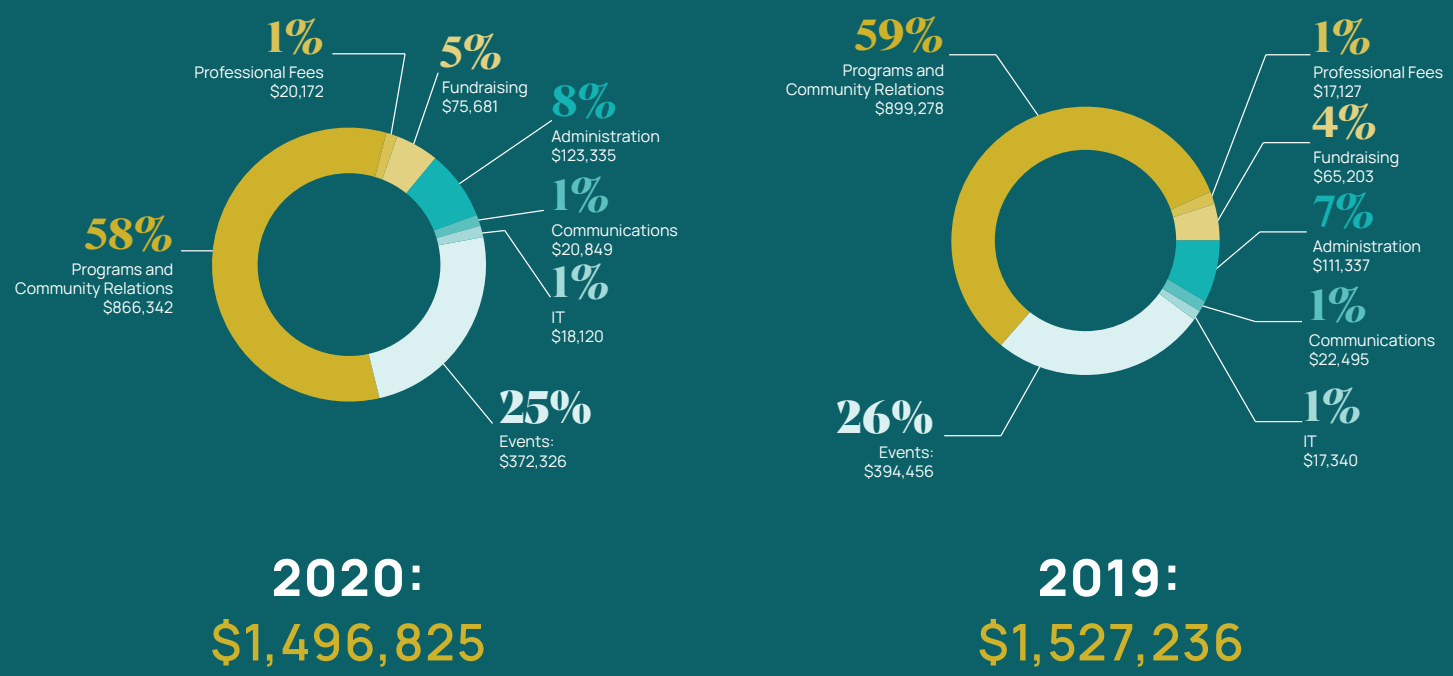
LIABILITIES		
Accounts Payable and Accruals	\$48,186	\$50,527
Deferred Contributions	\$230,939	\$293,871
Deferred Capital Contributions	\$2,962,130	\$3,025,444
	\$3,241,255	\$3,369,842

NET ASSETS		
General Fund - Unrestricted	\$2,753,432	\$2,710,039
Investment in Tangible Capital Assets	\$1,477,632	\$1,497,742
Internally Restricted	\$2,143,074	\$2,137,374
	\$6,374,138	\$6,345,155
	\$9,615,393	\$9,714,997

Revenue



Expenses



How You Can Support Us

Support Women Battling Cancer

Having to leave her home, support network, and community to travel for cancer treatment can be physically, emotionally, and financially devastating to a woman and her family—but it **doesn't have to be**.

When you support Compassion House Foundation, you help ease the distress of the cancer journey for women to find comfort, camaraderie, and inner strength during a time when they need it most.

Be part of the journey.

Support a Stay

A night, a week, or an entire stay—cover the cost and help women staying at Sorrentino's Compassion House focus on what's most important: healing.

Fashion with Compassion

See and be seen at one of Alberta's most noteworthy high-fashion events and critical fundraiser in the operation of Sorrentino's Compassion House.



Ways to Give

Monthly
Annual
In-Kind
Multi-Year Pledge
Legacy Gift
Gift in Honour
Gift of Securities

Corporate giving, fundraising partnerships, and sponsorships are also welcome.



Ways to Help

Host a Fundraiser
Volunteer
Spread the Word

Support In A Way That Suits You.

Direct your gift towards our greatest area of need or one of our programs and services:

During Treatment

Sorrentino's Compassion House

Safe, comfortable, and affordable accommodations for women who must travel to Edmonton for cancer treatment

Compassion Fund

Financial support for women staying at Sorrentino's Compassion House to help eliminate barriers to treatment

After Treatment

We Can Workshops

One-day workshops to empower women and their support network to thrive—not just survive—following cancer treatment

Compassion Network

A collective of former guests trained to facilitate support, advocate, and fundraise as Ambassadors in their home communities

If you want to help the cause, please consider the ways you can support. Contact Michelle Okere, Chief Executive Officer, at michelle@compassionhouse.org.



compassionhouse.org

10909 76 Avenue NW
Edmonton, AB
T6G 0J6

Phone: 780-425-7224
Toll-Free: 1-888-425-7474
Fax: 780-429-3018
Email: info@compassionhouse.org



Charitable Registration Number: 871667473 RR 0001